



ZTV Valves

2-way valve to control hot and cold water in HVAC systems

- Energy Savings by precise control
- Long-Lasting performance due to reliable design
- Hot/Cold water control
- Easy Installation and Integration

[Find more details in our online catalogue](#)

Precise Control and Energy Efficiency

The valves offer **precise control** over the flow rate of the fluid passing through them. The valves have **equal percentage flow characteristics** and rangeability better than 50:1. This enables more accurate temperature regulation, resulting in **improved energy efficiency** and **reduced operating costs**.

Reliable design. No leakage

The body and plug of the ZTV valve are manufactured in **brass** and the spindle is in **stainless steel**, ensuring **longevity** and **reliability**. The O-ring sealing between the plug and seat manufactured in **EPDM**, and makes valve **completely tight** in the closed position.

Water & cooling media

The ZTV 2-way valve is designed for use with **water** and **glycol-mixed** water cooling media with a maximum of **30% glycol** and temperature from **1 to 110°C**.

Easy Installation and Integration

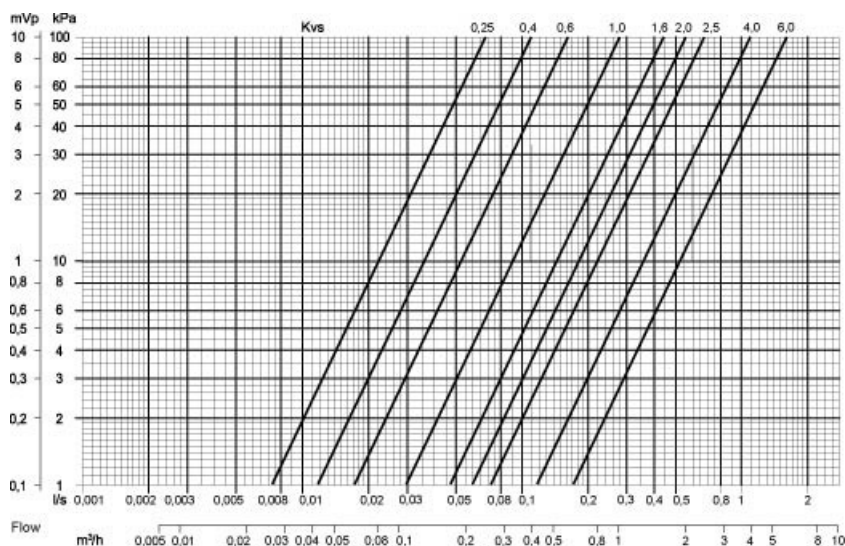
ZTV valves available in wide range of standard sizes **DN15...DN25**, compatible with standard piping systems. They are intended to be used together with the **RVAZ4 actuators** and easily integrated to various HVAC control systems.

Available in different sizes, the ZTV is a 2-way control valve that is designed to control hot and cold water in climate, heating and ventilation systems. For maximum efficiency and minimum wear, the valve should be installed in a vertical position with the stem pointing upward. If the valve is mounted with the actuator on the side, more wear will be caused to the valve packing box. The valve should never be mounted at an angle of more than 90°. If the valve is used in an installation with high media temperatures it should be mounted with the spindle to the side in order to minimise heating of the valve actuator. The valve is open when the stem is in its lowest position and closed when the stem is in its upmost position.

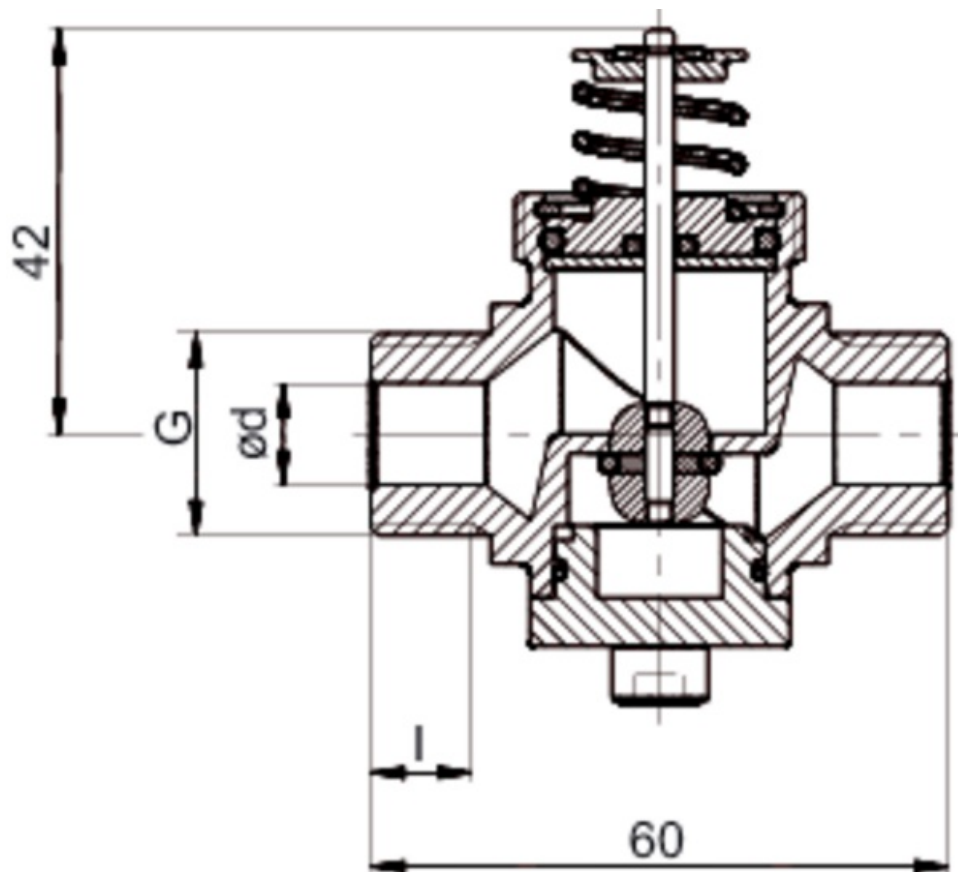
Technical parameters

Unit		
Product type	2-way valve	
Flow characteristics	Equal percentage	
Media temperature	1 to 110	°C
Max. Stroke	5	mm
Max. Leakage	0	%
Pressure rating class	PN16	
Regulating ratio	50:1	
Material body	Brass	
Material cone	Brass	
Stem	Stainless steel	
Packing box	EPDM	
Pipe connection size	DN15	
Type of pipe connection	External thread	
Dimensions and weights		
Weight	0.25	kg

Performances



Dimension



Accessories

- [RVAZ4 24A Actuator 0-10V \(9862\)](#)

Documents

- [ZTV_ZTR_EN.pdf](#)
- [EC_ZTV_ZTR_DN15-25.pdf](#)
- [MVD ZTV_ZTR_eng.pdf](#)